

McDowell Mountain Business Park | Office/Flex/Warehouse

FOR LEASE

±3,715 SQ. FT.

16416 N 92nd Street | Suite B105 | Scottsdale, Arizona 85260

**Solar Powered!
Lower Energy Costs**

100% HVAC

FEATURES

- **First Floor:** Reception, conference room, three (3) offices, kitchenette, restroom, 100% HVAC warehouse with roll-up door
- **Second Floor:** Mezzanine with three (3) offices, flex area and restroom

For further property information or to schedule a tour please contact:



Randy Shell
Designated Broker
C 480.694.4100
O 480.443.3992

randy@shellcommercial.com



480.443.3992

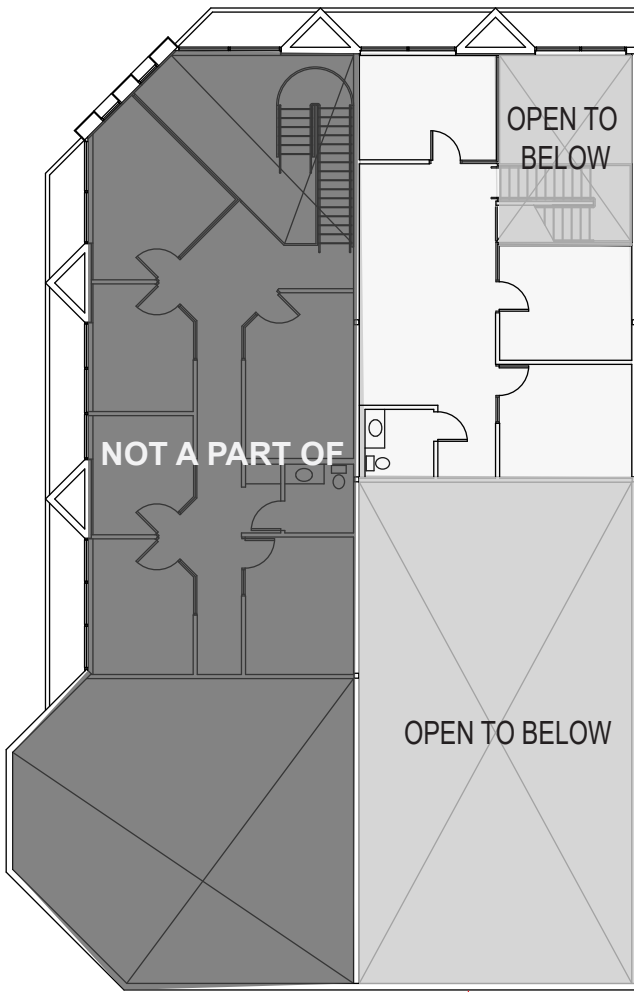
shellcommercial.com

480.443.3992 shellcommercial.com



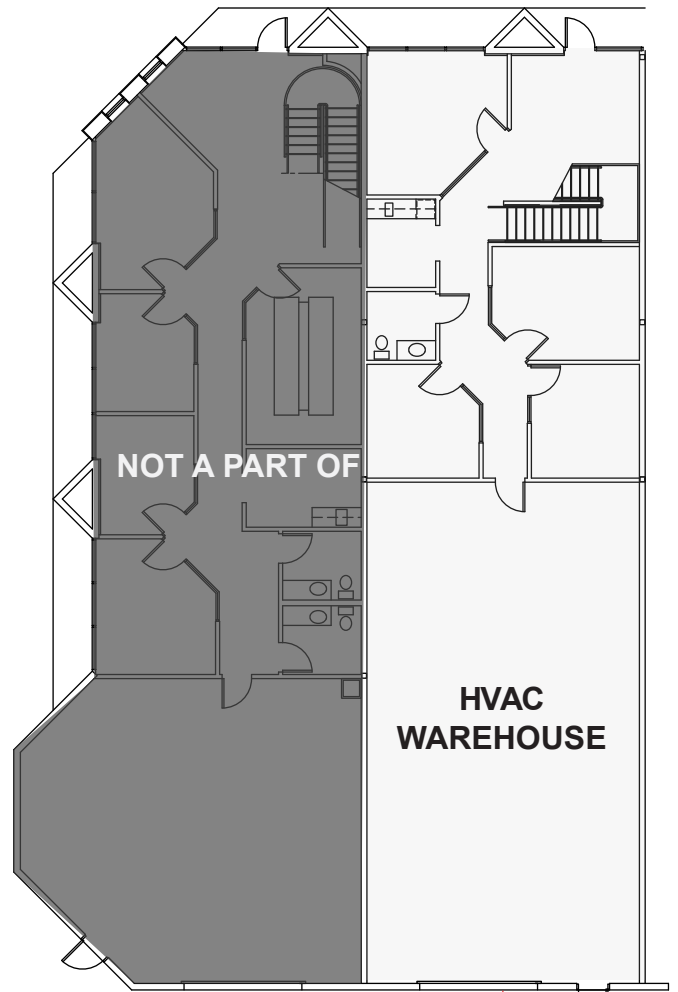
16410 N 91st Street | Suite 112 | Scottsdale, Arizona 85260

16416 N 92nd Street | Suite B105 | Scottsdale, Arizona 85260



2nd FLOOR

105



1st FLOOR

105

NOT TO SCALE

All information furnished regarding property for sale, rental or financing is from sources deemed reliable, but no warranty or representation is made to the accuracy thereof and same is submitted to errors, omissions, change of price, rental or other conditions, prior to sale, lease or financing or withdrawal without notice. No liability of any kind is to be imposed on the broker herein. This information has been secured from sources deemed reliable, however, we make no warranties as to its accuracy.

